

HEAD OFFICE

Teco Electric & Machinery Co., Ltd
10F No.3-1, Yuan Cyu St.
Nan-Kang Taipei 115
Taiwan ROC
Tel: +886 2 6615 9111
www.teco.com.tw

UNITED STATES

Teco-Westinghouse Motor Company
PO Box 227 (78680-0277)
5100 N.IH35
Round Rock Texas 78681 USA
Tel: +1 512 255 4141
+1 800 873 8326
www.tecowestinghouse.com

CANADA

Teco-Westinghouse
Motors Inc. (Canada)
18060-109th Ave
Edmonton, Alberta T5S 2K2 Canada
Tel: +1 780 444 8933
Fax: (780) 486-4575
24 HR Emergency Pager:
(780) 419 7734
Toll Free: 800-661-4023
Fax Toll Free: 888-USE-TWMI
www.twmi.com

UNITED KINGDOM

Teco Electric Europe Ltd.
26 Bond, Europa Way
Old Trafford, Manchester
M17 1WF England
Tel: +44 161 877 8025
www.teco.co.uk

NETHERLANDS

Teco Electric & Machinery B.V.
Teco's European Head Office
Rivium 3e Straat 27
2909 LH Capelle a/d IJssel
The Netherlands
Tel: +31 10 266 6633
Fax: +31 10 202 6415

GERMANY

Teco Electric & Machinery B.V.
Niederlassung Deutschland,
Marktstrasse 10
69 37441 Bad Sachsa
Germany
Tel: +49 5523 95340
Fax: +49 5523 953424
www.teco-westinghouse.de

SPAIN

Teco Electric & Machinery B.V.
Spain Office
C/Apostol Santiago, 38, 1^a-1
28017 Madrid, Spain
Tel/Fax: 34-91-326-30-91
E-mail: info@tecowestinghouse.es

TURKEY

OPTIMER Elektrik Makina Ltd.
Inonu cad. Sumko Sitesi M4-A blok
No: 2-kozyatagi-Istanbul 34742
Tel: +90-216-464 54 13Pbx.
Fax: +90-216-464 54 47

SAUDI ARABIA

Al Quraishi Electrical Services of S.A.
Al Quraishi Center, King Khalid Street,
P.O.Box 7386, Dammam-31462
Tel: +966 3 857-2537
Fax: +966 3 857-2541
www.aqesa.com

IRAN, AZERBAIJAN & ARMENIA

ATLAS DIBA Engineering & Trade Co.
No.3, Fakouri St., South Kadji Ave.
Golha Sq., Fatemi, Tehran, Iran
Tel: +98 21 88 33 03 81-3
Fax: +98 21 88 33 03 84
www.atlasdibaco.com

EGYPT

Amsol & Co.
38 Mossadak Street Dokki, Giza, Egypt
Tel: +202 333 79 774
Fax: +202 376 20 307

SOUTH AFRICA

ArmCoil Afrika (Pty) Ltd.
Unit 3 Prestige Park 127 Main Reef Road
Technikon Rodepoort
PO Box 500 Maraisburg 1700
Gauteng South Africa
Tel: +2711 763 2351
Fax: 0866 318 588
www.armcoil.co.za

AUSTRALIA

Teco Australia Pty Ltd.
335-337 Woodpark Road
Smithfield NSW 2164 Australia
Tel: +61 2 9765 8118
www.teco.com.au

NEW ZEALAND

Teco New Zealand Pty Ltd.
Unit 3, 477 Great South Road
Penrose Auckland New Zealand
Tel: +64 9 526 8480

JAPAN

Sankyo Co., Ltd.
26th fl. World Trading Center Bldg.
2-4-1 Hamamatsucho Minato-ku
Tokyo Japan 105-6126
Tel: +81 3 3435 9729
Fax: +81 3 3578 8381

SINGAPORE

Teco Electric & Machinery (PTE) Ltd.
18 chin Bee Drive
Singapore 619865
Tel: +65 6 265 4622
www.teco.com.sg

INDONESIA

P.T. Teco Multiguna Elektro
JL Bandengan Utara No. 83/1-2-3
Jakarta Utara-14440 Indonesia
Tel: +62 21 662 2201

CHINA

Shanghai Office
Rm 321 Building No.6
Lane 1279 Zhongshan W. Rd.
Shanghai. PRC
Tel: +86 21 5116 8255
Fax: +86 21 6278 8761

Wuxi Teco Electric & Machinery Co., Ltd

No. 9 South of Changjiang Road,
New Zone, Wuxi,
Jiangsu Province, PRC
Tel: +86 510 8534 2005
Fax: +86 510 8534 2001
www.wuxiteco.com

Jiangxi Teco Electric & Machinery Co., Ltd
189 Dongyuan Rd. Hi-Tech Zone, Nanchang
Jianxi Province, PRC
Tel: +86 791 819 5999
Fax: +86 791 816 7730

Suzhou Teco Electric & Machinery Co., Ltd
No. 1 Changjiang W.Rd. Liuhe
Taicang City, Suzhou,
Jiangsu Province, PRC
Tel: +86 512 5361 9901
Fax: +86 512 5396 1058

Fujian Teco Precision Co., Ltd.
Xiyang, Jiazhao, Zhanggang Village, Saiqi
Development
Zone, Fuan, Fujian, China
Tel: +86 593 633 0300
Fax: +86 593 633 0303

HONG KONG

Tecson Industrial Development
(HK) Co., Ltd
Rm 3712 Hong Kong Plaza
186-191 Connaught Rd. West
Hong Kong
Tel: +852 2858 3220

MALAYSIA

STE Marketing SDN BHD
6 Jalan Firma 2 Kawasan Perindustrian.
Tebrau 1 81100 Johor Bahru Johor Malaysia
Tel: +60 7 354 8008

THAILAND

Teco Electric & Machinery
(Thai) Co., Ltd.
128/1 Soi Watsrivareenoi
Moo 7 Bangna-Trad Road Km 18
Bangchalong Banglee
Samuthprakarn 10540 Thailand
Tel: +662 3371311- 20

VIETNAM

Teco(Vietnam) Electric & Machinery Co., Ltd
KCN LONG Thanh, Huyen Long Thanh,
Tinh Dong Nai. Vietnam
Tel: +84 61 3514151
Fax: +84 61 3514110

PHILIPPINES

Trade One
No. 56 Aragon Street San Francisco
Del Monte 1100 Quezon City Metro Manila,
Philippines
Tel: (632) 371-3032
Fax: (632) 371-1175
www.tradeoneinc.com

TECO

MAX-E1™

Premium Efficiency

Severe Duty Motor



Max-E1 Motors, Type AEHE:

In most industrial plants, motor electrical consumption accounts for up to 75% of the total electricity bill.

Compared with standard efficiency designs, the MAX-E1 will reduce your electrical bill and lower production costs. Also, it will provide for lower loading on electrical distribution circuits. In fact, the high efficiency design of the MAX-E1 can save you thousands of dollars over the life of the motor.

Furthermore, low temperature operation reduces fatigue and adds to the overall bearing life.

Impressive Design Features:

- * Non-hygroscopic, Class F insulation system.
- * High-grade, electro-magnetic steel laminations for low core loss and high efficiency.
- * All cast-iron construction including frame, end brackets, fan cover and conduit box for rigidity and excellent corrosion resistance.
- * Reinforced end turn lacing
- * Neoprene lead separator
- * High performance bearings of degassed steel
- * 90° rotatable oversized cast iron conduit box for easy connection.
- * Corrosion-resistant, non-sparking external fan.
- * Dynamically balanced pressure die-cast aluminum rotor.
- * Epoxy or phenolic rust-proof base coat
- * Zn-Cd coated hardware
- * CSA Certified for Class I, Division 2, Groups B, C, and D, with Temperature Code T3C.(CSA File 64671)

Name Plate

TECO MAX-E1™ PREMIUM EFFICIENCY SEVERE DUTY 3-PHASE INDUCTION MOTOR			
TYPE	HP	KW	FRAME
OUTPUT	INS.	F	TEFC
POLES			
Hz			
VOLTS			
AMPS			
R. P. M.			
DESIGN	AMB	40°C	
NEMA, NOM. EFF.	NEMA, MIN. EFF.		RATING CONT.
S. F.	1.15	BEARINGS	
CODE		SERIAL NO.	
USABLE ON	V NETWORK	AT	AMP.
TECO Elec. & Mach. Co., Ltd.			



Performance Data

ITEM		STANDARD SPECIFICATION	
RATING	KIND OF MOTOR	SQUIRREL-CAGE INDUCTION MOTOR (SCIM).	
	DESIGN STANDARD	NEMA MG-1, MG-13.	
	VOLTAGE	50Hz: 380V 60Hz: 230/460V(208V DE-RATING OPERATION), 460V ~ 575V	
	FREQUENCY	50Hz OR 60Hz	
	OUTPUT RANGE	1HP~350HP	
	R.P.M. (SYN.)	50Hz: 3000~750 R.P.M.(2~8 POLE) 60Hz: 3600~900 R.P.M.(2~8 POLE)	
	TIME DUTY	CONTINUOUS, 50Hz: S.F. 1.10(S1, MCR) 60Hz: S.F. 1.15(S1, MCR)	
	FRAME NO.	143T~449T & TS,5007~6808B	
	PROTECTION ENCLOSURE	FRAME NO.143T~449T & TS: TOTALLY ENCLOSED (IP 44) FRAME NO.5007~6808B: TOTALLY ENCLOSED (IP 54)	
	COOLING METHOD	SELF EXTERNAL FAN, SURFACE COOLING (IC 411).	
MOUNTING	HORIZONTAL FOOT MOUNTING F-1 (IM 1001), HOWEVER, F-1,F-2 ARE CHANGEALBE.		
APPLICATION	AMBIENT CONDITION	PLACE	NON-HAZARDOUS.
		TEMPERATURE	-15°C ~40°C
		HUMIDITY	RELATIVE HUMIDITY: LESS THAN 90% RH (NON-CONDENSATION).
		ALTITUDE	LESS THAN 3,300FT (1000M).
	DRIVE METHOD	BELT SERVICE, HOWEVER, 2 POLE 25HP AND UP COUPLING SERVICE IS THE WAY.	
	DIRECTION OF ROTATION	BI-DIRECTIONAL	
	METHOD OF STARTING	FULL VOLTAGE DIRECT ON LINE, FOR 7.5HP & UP Y-Δ STARTING.	
CONSTRUCTION	BEARING	BRACKET MOUNTING, VACUUM DE-GASSED HIGH QUALITY OPEN BEARINGS WITH GREASE RELIEF VALVE FOR FRAME SIZE OF 280TS AND 324T~405TS, GREASE PRE-PACKED SHIELDED ROLLING BEARINGS, WITH GREASE RELIEVABLE UNITES FOR THE OTHERS.	
	TERMINAL BOX	CAST IRON, THE CLEARANCE HOLE CABLE ENTRANCE IN N.P.T. THREADED, CAN BE SET 90° APART, WITH CLEARANCE HOLE CABLE ENTRANCE, F-1, F-2 CHANGEABLE.	
	LEAD TERMINAL	9 LEADS, WITH SOLDERLESS LUG TERMINALS UNDER 7.5HP. 12 LEADS, WITH SOLDERLESS LUG TERMINALS FOR 7.5HP TO 125HP. 6 LEADS, WITH SOLDERLESS LUG TERMINALS OVER 125HP.	
	STATOR INSULATION	CLASS F INSULATION SYSTEM	
	PAINTING	PHENOLIC RUST PROOF BASE PLUS LACQUER SURFACE FINISHED PAINTING IN BLUE-GRAY COLOR (MUNSELL N5.0).	
	BOLT THREAD	ISO METRIC SYSTEM	
PERFORMANCE	TEST PROCEDURE	IEEE-112 METHOD B AND FULL VOLTAGE MEASURING STARTING PERFORMANCE FOR MOTORS NOT OVER 300HP, IEEE-112 METHOD E1 AND REDUCED VOLTAGE MEASURING STARTING PERFORMANCE FOR THE OTHERS.	
	TEMPERATURE RISE	NOT TO EXCEED 90°C FOR S.F. 1.15 OR 80°C FOR S.F. 1.0 BY RESISTANCE METHOD.	
	OVER SPEED	FRAME NO.143T~449T & TS: 125% SYN. R.P.M. FOR 2 MINUTES(2~4 POLE) 150% SYN. R.P.M. FOR 2 MINUTES(6~8 POLE) FRAME NO.5007~6808B: 120% SYN. R.P.M. FOR 2 MINUTES(2 POLE) 125% SYN. R.P.M. FOR 2 MINUTES(4~8 POLE)	
	OVER TORQUE	160% RATED TORQUE FOR 15 SEC.	

Dimensions Totally-Enclosed Fan-Cooled Horizontal Foot-Mounted, Type AEHE

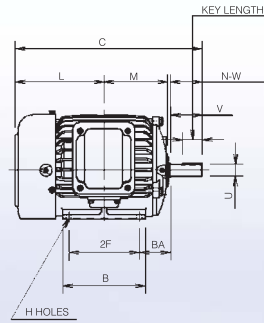


FIG. 1

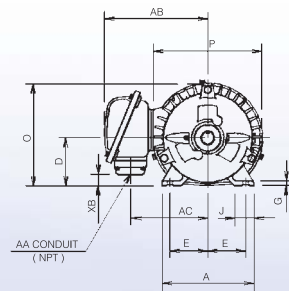
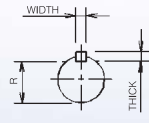


FIG. 2

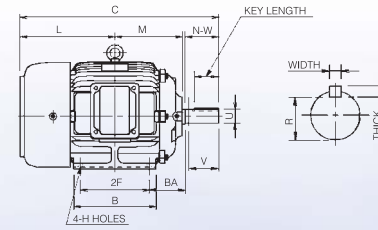
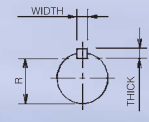


FIG. 3

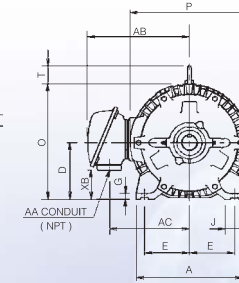


FIG. 4

1. Dimension D tolerance :
+0.00 inch - 0.03 inch (143T-405TS);
+0.00 inch - 0.06 inch (444T-449T).
2. Dimension U tolerance:
+0.000 inch - 0.0005 inch (143T-215T);
+0.000 inch - 0.001 (254T-6808B).
3. Dimension R tolerance:
+0.000 inch - 0.015 inch.
4. Dimension V is the length of straight part of shaft.

OUT PUT (HP)				FRAME SIZE (EH)	FIG.	MOUNTING					A	B	C	CL1	CL2	D	G	J	K	L	
2P	4P	6P	8P			E	2F	2F1	2F2	H											BA
1.5	1	0.75	—	143T	1	2.75	4.00	—	—	0.34	2.25	6.7	5.1	12.34	—	—	3.5	0.35	1.4	—	5.84
2	1.5	1	—	145T		2.75	5.00	—	—	0.34	2.25	6.7	5.9	13.32	—	—	3.5	0.35	1.4	—	6.32
3	3	1.5	1	182T	2	3.75	4.50	—	—	0.41	2.75	8.8	5.9	14.71	—	—	4.5	0.65	1.75	—	6.96
5	5	2	1.5	184T		3.75	5.50	—	—	0.41	2.75	8.8	6.9	15.73	—	—	4.5	0.65	1.75	—	7.48
7.5	7.5	3	2	213T	3	4.25	5.50	—	—	0.41	3.5	9.85	6.9	17.98	—	—	5.25	0.7	1.75	—	8.35
10	10	5	3	215T		4.25	7.00	—	—	0.41	3.5	9.85	8.35	19.48	—	—	5.25	0.7	1.75	—	9.1
15	15	7.5	5	254T	4	5.00	8.25	—	—	0.53	4.25	11.8	9.85	23.7	—	—	6.25	0.65	1.95	—	11.33
20	20	10	7.5	256T		5.00	10.00	—	—	0.53	4.25	11.8	11.8	25.44	—	—	6.25	0.65	1.95	—	12.19
25	—	—	—	284TS	3	5.50	9.50	—	—	0.53	4.75	14	11.7	25.43	—	—	7	0.7	2.95	—	12.68
—	25	15	10	284T		5.50	9.50	—	—	0.53	4.75	14	11.7	26.8	—	—	7	0.7	2.95	—	12.68
30	—	—	—	286TS	4	5.50	11.00	—	—	0.53	4.75	14	13.2	26.93	—	—	7	0.7	2.95	—	13.43
—	30	20	15	286T		5.50	11.00	—	—	0.53	4.75	14	13.2	28.3	—	—	7	0.7	2.95	—	13.43
40	—	—	—	324TS	3	6.25	10.50	—	—	0.66	5.25	15.75	12.8	28.43	—	—	8	1.1	3.15	—	14.18
—	40	25	20	324T		6.25	10.50	—	—	0.66	5.25	15.75	12.8	29.93	—	—	8	1.1	3.15	—	14.18
50	—	—	—	326TS	4	6.25	12.00	—	—	0.66	5.25	15.75	14.35	29.92	—	—	8	1.1	3.15	—	14.92
—	50	30	25	326T		6.25	12.00	—	—	0.66	5.25	15.75	14.35	31.42	—	—	8	1.1	3.15	—	14.92
60	—	—	—	364TS	3	7.00	11.25	—	—	0.66	5.88	17.7	13.75	30.44	—	—	9	1.3	3.55	—	15.19
—	60	40	30	364T		7.00	11.25	—	—	0.66	5.88	17.7	13.75	32.57	—	—	9	1.3	3.55	—	15.19
75	—	—	—	365TS	4	7.00	12.25	—	—	0.66	5.88	17.7	14.75	31.42	—	—	9	1.3	3.55	—	15.67
—	75	50	40	365T		7.00	12.25	—	—	0.66	5.88	17.7	14.75	33.55	—	—	9	1.3	3.55	—	15.67
—	—	60	50	404T	3	8.00	12.25	—	—	0.81	6.62	19.7	15.15	36.3	—	—	10	1.55	3.95	—	16.3
100	—	—	—	405TS		8.00	13.75	—	—	0.81	6.62	19.7	16.75	34.8	—	—	10	1.55	3.95	—	17.05
—	100	75	60	405T	8.00	13.75	—	—	0.81	6.62	19.7	16.75	37.8	—	—	10	1.55	3.95	—	17.05	

★ DIMENSIONS IN INCHES

M	O	P	T	KEY SIZE			TERMINAL HOUSING			SHAFT EXTENSION			KEYSEAT R	BEARINGS		APPROX. WEIGHT LBS	
				WIDTH	THICK	LENGTH	AA	AB	AC	XB	N-W	U		V	DRIVE END		OPR. DRIVE END
4.03	7.48	7.97	—	0.188	0.188	1.41	3/4	7.56	5.63	0.86	2.25	0.875	2.2	0.771	6205ZZ	6205ZZ	55
4.53	7.48	7.97	—	0.188	0.188	1.41	3/4	7.56	5.63	0.86	2.25	0.875	2.2	0.771	6205ZZ	6205ZZ	62
4.87	9.31	9.61	1.30	0.25	0.25	1.78	3/4	8.31	6.38	1.86	2.75	1.125	2.7	0.986	6306ZZ	6306ZZ	95
5.37	9.31	9.61	1.30	0.25	0.25	1.78	3/4	8.31	6.38	1.86	2.75	1.125	2.7	0.986	6306ZZ	6306ZZ	114
6.06	10.8	11.1	1.65	0.312	0.312	2.41	1	9.78	7.34	2.34	3.38	1.375	3.3	1.201	6308ZZ	6306ZZ	167
6.81	10.8	11.1	1.65	0.312	0.312	2.41	1	9.78	7.34	2.34	3.38	1.375	3.3	1.201	6308ZZ	6306ZZ	189
8.06	12.83	13.15	2.01	0.375	0.375	2.91	1	11.3	8.86	3.22	4	1.625	3.9	1.416	6309ZZ	6307ZZ	288
8.94	12.83	13.15	2.01	0.375	0.375	2.91	1	11.3	8.86	3.22	4	1.625	3.9	1.416	6309ZZ	6307ZZ	332
9.31	14.52	15.04	2.36	0.375	0.375	1.93	1	12.28	9.84	3.97	3.25	1.625	3.2	1.416	6211C3	6211C3	418
9.23	14.52	15.04	2.36	0.5	0.5	3.28	1	12.28	9.84	3.97	4.62	1.875	4.5	1.591	6311ZZ	6310ZZ	429
10.06	14.52	15.04	2.36	0.375	0.375	1.93	1	12.28	9.84	3.97	3.25	1.625	3.2	1.416	6211C3	6211C3	455
9.98	14.52	15.04	2.36	0.5	0.5	3.28	1	12.28	9.84	3.97	4.62	1.875	4.5	1.591	6311ZZ	6310ZZ	475
10.29	16.27	16.54	2.36	0.5	0.5	2.03	2	14.65	11.3	3.59	3.75	1.875	3.65	1.591	6312C3	6212C3	618
10.29	16.27	16.54	2.36	0.5	0.5	3.91	2	14.65	11.3	3.59	5.25	2.125	5.15	1.845	6312	6212	664
11.04	16.27	16.54	2.36	0.5	0.5	2.03	2	14.65	11.3	3.59	3.75	1.875	3.65	1.591	6312C3	6212C3	693
11.04	16.27	16.54	2.36	0.5	0.5	3.91	2	14.65	11.3	3.59	5.25	2.125	5.15	1.845	6312	6212	724
11.29	18.02	18.03	2.76	0.5	0.5	2.03	3	16.81	13	2.39	3.75	1.875	3.65	1.591	6312C3	6212C3	818
11.29	18.02	18.03	2.76	0.625	0.625	4.28	3	16.81	13	2.39	5.88	2.375	5.75	2.021	6313	6213	880
11.79	18.02	18.03	2.76	0.5	0.5	2.03	3	16.81	13	2.39	3.75	1.875	3.65	1.591	6312C3	6212C3	898
11.79	18.02	18.03	2.76	0.625	0.625	4.28	3	16.81	13	2.39	5.88	2.375	5.75	2.021	6313	6213	928
12.52	20.04	20.08	3.54	0.75	0.75	5.65	3	19.37	14.76	1.81	7.25	2.875	7.15	2.45	6317	6313	1166
13.27	20.04	20.08	3.54	0.5	0.5	2.78	3	19.37	14.76	1.81	4.25	2.125	4.15	1.845	6313C3	6313C3	1144
13.27	20.04	20.08	3.54	0.75	0.75	5.65	3	19.37	14.76	1.81	7.25	2.875	7.15	2.45	6317	6313	1298

Dimensions Totally-Enclosed Fan-Cooled Horizontal Foot-Mounted, Type AEHE

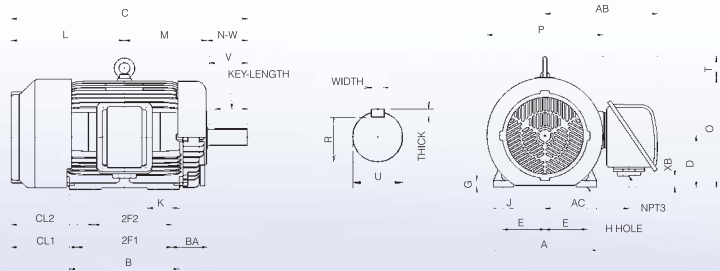


FIG. 5

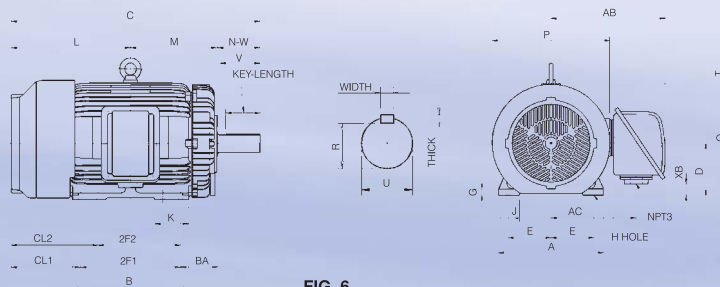


FIG. 6

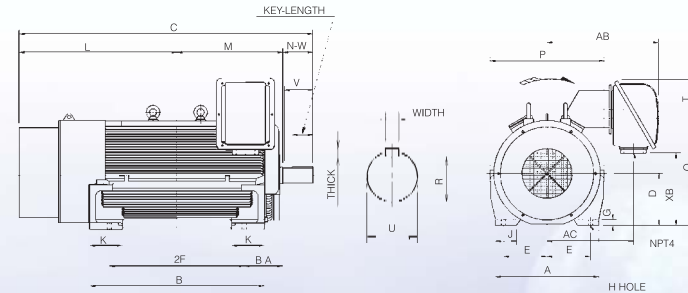


FIG. 7

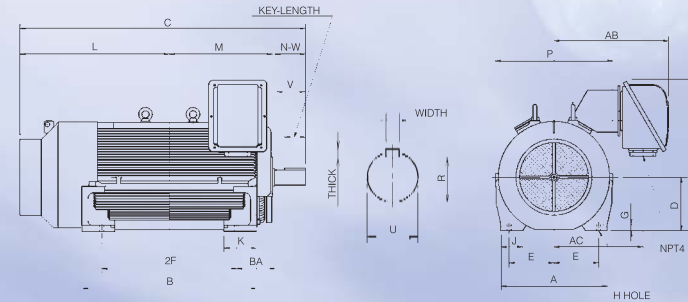


FIG. 8

1. Dimension D tolerance : +0.00 inch-0.06 inch (444T-6808B).
2. Dimension U tolerance: +0.000 inch - 0.001 inch (444T -6808B).
3. Dimension R tolerance: +0.000 inch - 0.015 inch.
4. Dimension V is the length of straight part of shaft.

OUT PUT (HP)				FRAME SIZE (EH)	FIG.	MOUNTING					A	B	C	CL1	CL2	D	G	J	K	L	
2P	4P	6P	8P			E	2F	2F1	2F2	H											BA
125	—	—	—	444TS	5	9.00	—	14.50	—	0.81	7.50	22.05	17.50	40.65	13.9	—	11.00	1.40	4.35	4.35	21.15
—	125	100	75	444T	6	9.00	—	14.50	—	0.81	7.50	22.05	17.50	44.40	13.9	—	11.00	1.40	4.35	4.35	21.15
150	—	—	—	445TS	5	9.00	—	16.50	14.5	0.81	7.50	22.05	19.50	42.65	13.9	15.9	11.00	1.40	4.35	5.10	22.15
—	150	125	100	445T	6	9.00	—	16.50	14.5	0.81	7.50	22.05	19.50	46.40	13.9	15.9	11.00	1.40	4.35	5.10	22.15
200	—	—	—	447TS	5	9.00	—	20.00	16.5	0.81	7.50	22.05	23.25	46.15	13.9	17.4	11.00	1.40	4.35	6.70	23.90
—	200	150	125	447T	6	9.00	—	20.00	16.5	0.81	7.50	22.05	23.25	49.90	13.9	17.4	11.00	1.40	4.35	6.70	23.90
250	—	—	—	449TS	5	9.00	—	25.00	20	0.81	7.50	22.05	27.95	51.15	13.9	18.9	11.00	1.40	4.35	8.25	26.40
—	250 300 350	200 250 300	150 200	449T	6	9.00	—	25.00	20	0.81	7.50	22.02	27.95	54.90	13.9	18.9	11.00	1.40	4.35	8.25	26.40
400	—	—	—	5009A	7	10.00	28.00	—	—	0.94	8.50	25.60	34.65	69.20	—	—	12.50	1.85	5.90	7.10	40.95
—	400	—	—	5009B	8	10.00	28.00	—	—	0.94	8.50	25.60	34.65	69.75	—	—	12.50	1.85	5.90	7.10	35.63
450 500	—	—	—	5011A	7	10.00	36.00	—	—	0.94	8.50	25.60	42.50	77.15	—	—	12.50	1.85	5.90	7.10	44.90
—	450 500	400	—	5011B	8	10.00	36.00	—	—	0.94	8.50	25.60	42.50	77.67	—	—	12.50	1.85	5.90	7.10	39.55
600 700	—	—	—	5810A	7	11.50	36.00	—	—	1.13	10.00	29.55	44.10	81.40	—	—	14.50	1.70	5.90	9.65	47.65
—	600 500	450 450	—	5808B	8	11.50	28.00	—	—	1.13	10.00	29.55	36.60	74.08	—	—	14.50	1.70	5.90	9.65	38.20
—	700 800	600 700	500	5810B		11.50	36.00	—	—	1.13	10.00	29.55	44.10	81.81	—	—	14.50	1.70	5.90	9.65	41.93
—	—	800 700	600 800	6808B		13.50	36.00	—	—	1.38	11.50	35.00	48.45	87.68	—	—	17.00	2.00	7.10	10.65	46.30

★ DIMENSIONS IN INCHES

M	O	P	T	KEY SIZE			TERMINAL HOUSING				SHAFT EXTENSION			KEYSEAT R	BEARINGS		APPROX. WEIGHT		
				WIDTH	THICK	LENGTH	AA	AB	AC	XB	N-W	U	V		DRIVE END	OPR. DRIVE END	LBS		
14.40	23.55	24.75	4.35	0.625	0.625	3.03	—	24.00	17.90	2.40	4.75	2.375	4.50	2.021	6314C3	6314C3	1450		
14.40	23.55	24.75	4.35	0.875	0.875	6.91	—	24.00	17.90	2.40	8.50	3.375	8.00	2.880	6318	6316	1680/1550/1650		
15.40	23.55	24.75	4.35	0.625	0.625	3.03	—	24.00	17.90	2.40	4.75	2.375	4.50	2.021	6314C3	6314C3	1550		
15.40	23.55	24.75	4.35	0.875	0.875	6.91	—	24.00	17.90	2.40	8.50	3.375	8.00	2.880	6318	6316	1700/1850/1730		
17.15	23.55	24.75	4.35	0.625	0.625	3.03	—	24.00	17.90	2.40	4.75	2.375	4.50	2.021	6314C3	6314C3	2100		
17.15	23.55	24.75	4.35	0.875	0.875	6.91	—	24.00	17.90	2.40	8.50	3.375	8.00	2.880	6320	6316	2260/2160/2200		
19.65	23.55	24.75	4.35	0.625	0.625	3.03	—	24.00	17.90	2.40	4.75	2.375	4.50	2.021	6314C3	6314C3	2530		
19.65	23.55	24.75	4.35	0.875	0.875	6.91	—	24.00	17.90	2.40	8.50	3.375	8.00	2.880	6320	6316	2580 / 2750 / 2400 2650 / 3060 3100 / 3300 / 3150		
21.90	27.07	28.75	7.50	0.625	0.625	4.01	—	26.20	20.10	18.60	5.75	2.625	5.50	2.275	6315C3	6315C3	3590		
22.10	27.07	28.75	7.50	1.000	1.000	10.00	—	26.20	20.10	18.60	11.62	3.875	11.12	3.309	6324	6320	3700		
25.80	27.07	28.75	7.50	0.625	0.625	4.01	—	26.20	20.10	18.60	5.75	2.625	5.50	2.275	6315C3	6315C3	4360 4760		
26.00	27.07	28.75	7.50	1.000	1.000	10.00	—	26.20	20.10	18.60	11.62	3.875	11.12	3.309	6324	6320	4360 / 4750 / 4600		
26.95	31.45	33.85	9.45	0.625	0.625	4.01	—	30.50	24.40	21.15	5.75	2.625	5.50	2.275	6315C3	6315C3	6160 6710		
23.40	31.45	33.85	9.45	1.250	1.250	10.00	—	30.50	24.40	21.10	11.88	4.875	11.38	4.169	6326	6322	5940 / 5680 / 5500 6050 / 5720		
27.20	31.45	33.85	9.45	1.250	1.250	10.00	—	30.50	24.40	21.10	11.88	4.875	11.38	4.169	6326	6322	6650 / 6050 / 6380 7100 / 6700		
28.70	36.30	38.80	9.05	1.250	1.250	10.00	—	31.80	25.70	25.90	11.88	4.875	11.38	4.169	6326	6322	8140 8360 / 8700 9020		